



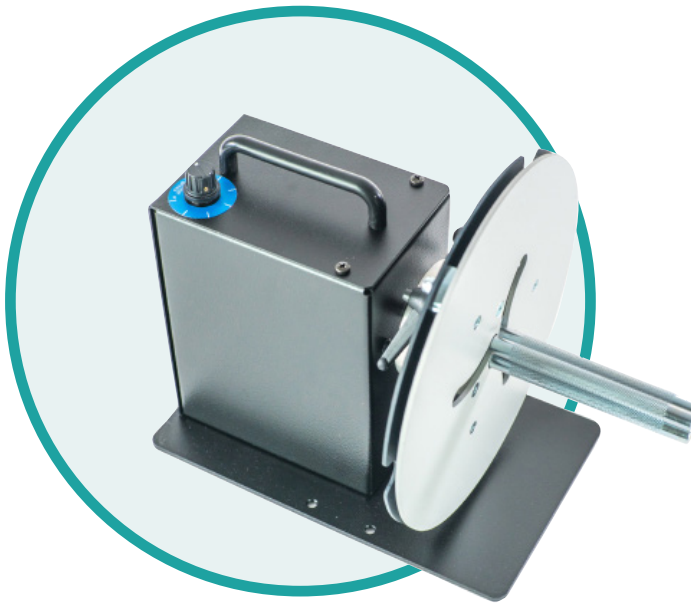
GREAT EASTERN IDTECH OFFERS YOU A RANGE OF PRINTER ACCESSORIES
TO WORK SMARTER, EASIER AND FASTER.

LABEL DISPENSERS
LABEL REWINDERS
LABEL UNWINDERS
LABEL COUNTERS

Label rewinders

MINI-CAT REWINDERS MC-10/MC-11

The MINI-CAT rewinders are the world's most popular entry-level label rewinders to be used in combination with small desktop or mid-range barcode printers. With a specially designed bi-directional motor, they offer trouble-free performance at an incredible low cost.



- ✓ Small footprint to fit on any desk
- ✓ Easy setup: attach the labels to the take-up core and ready to start
- ✓ Speed up to 50cm/sec to work with desktop or mid-range barcode printers
- ✓ Bi-Directional
- ✓ Large capacity for roll diameters up to 220mm
- ✓ MC-11 model employs an adjustable core holder (ACH) enabling the use of varying core sizes from 25mm to 101mm
- ✓ Adjust the rewind force with a built-in potentiometer

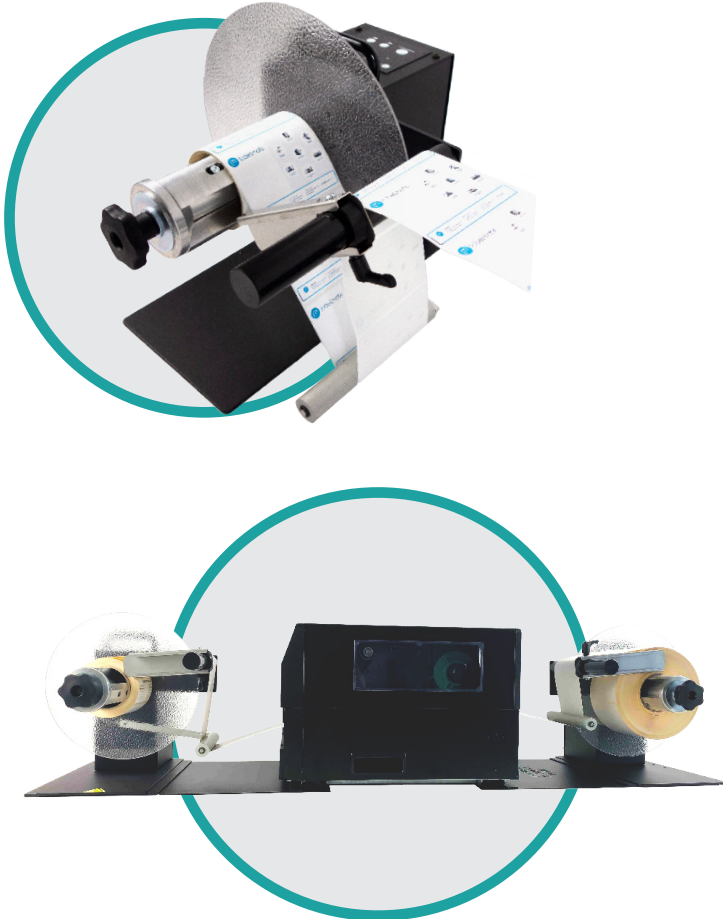
MOST POPULAR CHOICES

| P/N | MODEL | DESCRIPTION | MAX LABEL WIDTH |
|--------|--------------|--|-----------------|
| LMR001 | MC-10 | Standard for rewinding on cores 76mm. On request for core diameters 38/40/44/50/70/100 mm. | 125 mm |
| LMR002 | MC-10-1-INCH | Standard for rewinding on cores 25,4 mm | 125 mm |
| LMR003 | MC-11 | With Adjustable Core Holder, for rewinding on cores between 25 and 101 mm diameter. | 115 mm |

Industrial & colour

UNIVERSAL & INTELLIGENT UNI-CAT

The new UNI-CAT is the smartest and most “UNI-VERSATILE” rewinder/unwinder in the Labelmate product range ! With various core sizes, label widths, roll diameters and options to choose from, there is a rewinder/unwinder to fit any job you may have. The new UNI-CAT replaces all CAT-3-TA models (with Tension Arm) and CAT-4 models.



- ✓ Self-teaching to work as rewinder or unwinder
- ✓ Supports back-feed process for colour inkjet & tension sensitive printers
- ✓ Auto-Speed Adjustment to align with printer speed
- ✓ Speed up to 125cm/sec to work with the fastest bar-code printers available
- ✓ Bi-Directional for internal & external winding
- ✓ New maintenance free, soft-touch control panel with LED-Status-Indicators
- ✓ Standard with paper guide for straight and tight label rolls, no flanges needed

MOST POPULAR CHOICES

| P/N | MODEL | DESCRIPTION | MAX LABEL WIDTH | MAX ROLL DIAM | MAX WEIGHT |
|----------------|------------------|---|-----------------------------|---------------|------------|
| LMR042 | UNI-CAT-STANDARD | Standard for 76mm cores (38/40/44/50/70/100mm available) | 155 mm | 300 mm | 8 KG |
| LMR043 | UNI-CAT-ACH | Adjustable Core Holder for using any core diameter between 25 & 101 mm. | 155 mm | 280 mm | 7 KG |
| LMR044 | UNI-CAT-CHUCK | Easy-Loading Quick-Chuck for 76mm cores (38/40/44/70/100mm available) | 170 mm (optional 220 & 270) | 300 mm | 10 KG |
| LMR044 /LMX484 | UNI-CAT-CHUCK | Easy-Loading Quick-Chuck for 76mm cores | 220 mm | 300 mm | 10 KG |
| LMR049 | UNI-CAT-XL | Easy-Loading Quick-Chuck for 76mm cores | 170 mm | 400 mm | 14 KG |

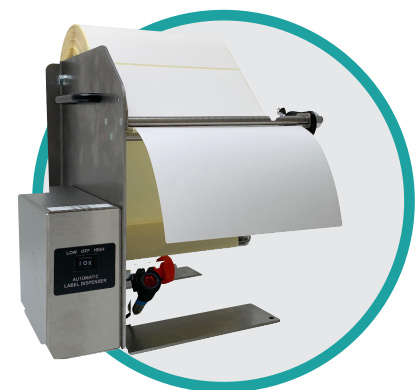
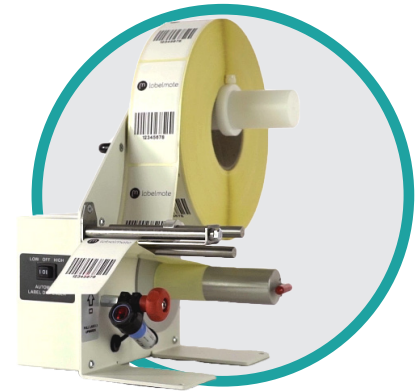
Powered label dispensers

LABELMATE label dispensers are a quick and easy way to **dispense individual labels**. They use a peel and present design, meaning that as the material passes through the dispenser the label is peeled away from the backing material and presented at the front of the unit where it waits to be picked up by the operator. With different models to choose from these label dispensers **can handle virtually any job** you may have for them.

LD-100 FOR LABELS UP TO 115MM WIDE

LD-200 FOR LABELS UP TO 165MM WIDE

LD-300 FOR LABELS UP TO 218MM WIDE



- ✓ Small footprint to fit on any desk or packaging station
- ✓ Easy setup in less than 30 seconds
- ✓ Available in stainless steel (SS Version) (food & beverage, pharmaceutical market)
- ✓ Selectable speed (high-low) for applications with small or large labels

OPTIONAL

- Universal sensor models for transparent labels
- Counter or pre-set counter for peeling off a precise number of labels
- Diameter extension to facilitate the use of labels rolls up to 300 mm
- Battery pack to work without external power supply for maximum mobility

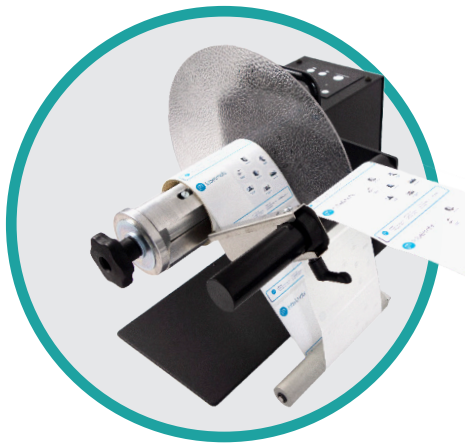
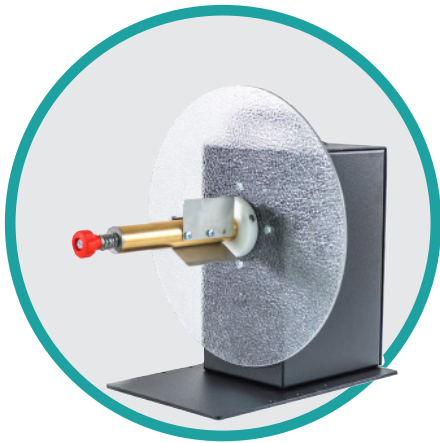
MOST POPULAR CHOICES

| P/N | MODEL | LABEL TYPE | MAX WIDTH mm | MIN. LENGTH mm |
|--------|--------------|-------------|--------------|----------------|
| LMD001 | LD-100-RS | | 115 | 6 |
| LMD005 | LD-100-U | TRANSPARENT | 115 | 20 |
| LMD002 | LD-200-RS | | 165 | 6 |
| LMD006 | LD-200-U | TRANSPARENT | 165 | 20 |
| LMD014 | LD-300-RS-SS | | 218 | 50 |
| LMD016 | LD-300-U-SS | TRANSPARENT | 218 | 50 |

Label unwinders

Label unwinders provide a convenient way to **manage your supply roll of labels** as it feeds into a printer. You can use larger rolls of labels to minimize your unit label cost. The supply roll of labels does not have to be refreshed as often, **saving time and adding convenience**. External label rolls are always visible, making it easy to monitor the status of your label supply.

LABELMATE unwinders, powered or non-powered, provide the most advanced unwinding solutions available. They are **recommended for demanding production applications**.



- ✓ Small footprint to fit on any desk
- ✓ Speed up to 125cm/sec to work with the fastest barcode printers available on the market
- ✓ Large capacity for roll diameters up to 400mm
- ✓ Can be used as full featured rewinder without any special setup

MOST POPULAR CHOICES

| P/N | MODEL | DESCRIPTION/PRINTER TYPE | MAX WIDTH mm | ROLL DIAM mm | SPEED cm/sec |
|--------|-------------|-----------------------------|--------------|--------------|--------------|
| LMU014 | UCAT-S-MINI | UNPOWERED, DESKTOP | 125 | 220 | printer |
| LMU001 | UCAT-S | UNWPOWERED, SEMI-INDUSTRIAL | 155 | 300 | printer |
| LMR | UNI-CAT | SEE REWINDER UNI-CAT | 155/270 | 280/400 | printer |

Counting solutions

Label counters provide a quick and easy way to **count the number of labels on a roll**.

Off-Line counting can be done with either a **counting package** or a self contained **reel-to-reel unit**. Both units allow you to count the number of labels on a given roll, make large rolls of labels into smaller ones, change the direction of the labels coming off the roll or change to a different core size.

RRC-330 REEL-TO-REEL COUNTING STATION



- ✓ Stand-alone counting stations with pre-set counter functionality
- ✓ Accepts rolls with a diameter up to 330mm
- ✓ Adjustable Tension setting on the unwind shaft for reliable counting and tight rolls
- ✓ Optional delivered with an ultrasonic sensor for transparent and dark labels
- ✓ Take-up shaft can be the Adjustable Core Holder (ACH) or Quick-Chuck

MOST POPULAR CHOICES

RRC-330-COUNTING STATIONS

| P/N | MODEL | DESCRIPTION |
|--------|--------------------|---|
| LMC001 | RRC-330-STANDARD | Reel-to-Reel Counting Station with Standard Take-up shaft. Unwind and rewind on cores of 40 & 76mm. (other diameters available on demand: 38/44/50/70/100 mm) |
| LMC002 | RRC-330-ACH | Reel-to-Reel Counting Station with Adjustable Take-up shaft for rewinding on cores between 25 and 101 mm diameter |
| LMC003 | RRC-330-U-STANDARD | Standard model with Ultrasonic Sensor mounted on adjustable bracket. For counting transparent, black and special shaped labels |
| LMC004 | RRC-330-U-ACH | ACH model with Ultrasonic Sensor mounted on adjustable bracket. For counting transparent, black and special shaped labels |



Our entire team stays with you all the way.
Don't hesitate to contact us:

Great Eastern IDTech Pvt. Ltd.
#285 Udyog Vihar Phase II,
Gurugram- 122016, Haryana

Support: 1800 102 0170
sales@geipl.com